

Offices
on two floors
undergoing full
refurbishment



ST JAMES
GATE

Prestigious City Centre
offices only a short walk from
Newcastle Central Station.

Space available from 291.9 sq m (3,412 sq ft)



St James' Park

Eldon Square Shopping Centre

Greys Monument

Newcastle Central Station

Crowne Plaza Hotel

Stephenson Quarter

St James' Boulevard

Centre for Life

2
ST JAMES GATE

Forth Goods Yard
(mixed use development)

Pottery Lane
(519 built to rent apartments under construction)

Quayside West
(residential development)

Offering one of the most accessible locations in Newcastle City Centre.

Positioned immediately west of Central Station, this superb location is also the western entrance to the City Centre and its close proximity to St James' Boulevard & the Redheugh Bridge provides excellent access to the A1 North and South.

M Metro Stations
P Public Parking





2 St. James Gate's recent refurbishment delivers some of the best space in the city including a contemporary and stylish reception area, ideal for welcoming guests and clients, plus open plan Grade A office space with panoramic views of the city.

The ground and sixth floors are undergoing an extensive refurbishment to offer high quality office space including all-electric VRF air conditioning.



Floor plans

No2 St James Gate offers one of the only column free floor plates in the city and provides very flexible and adaptable accommodation.



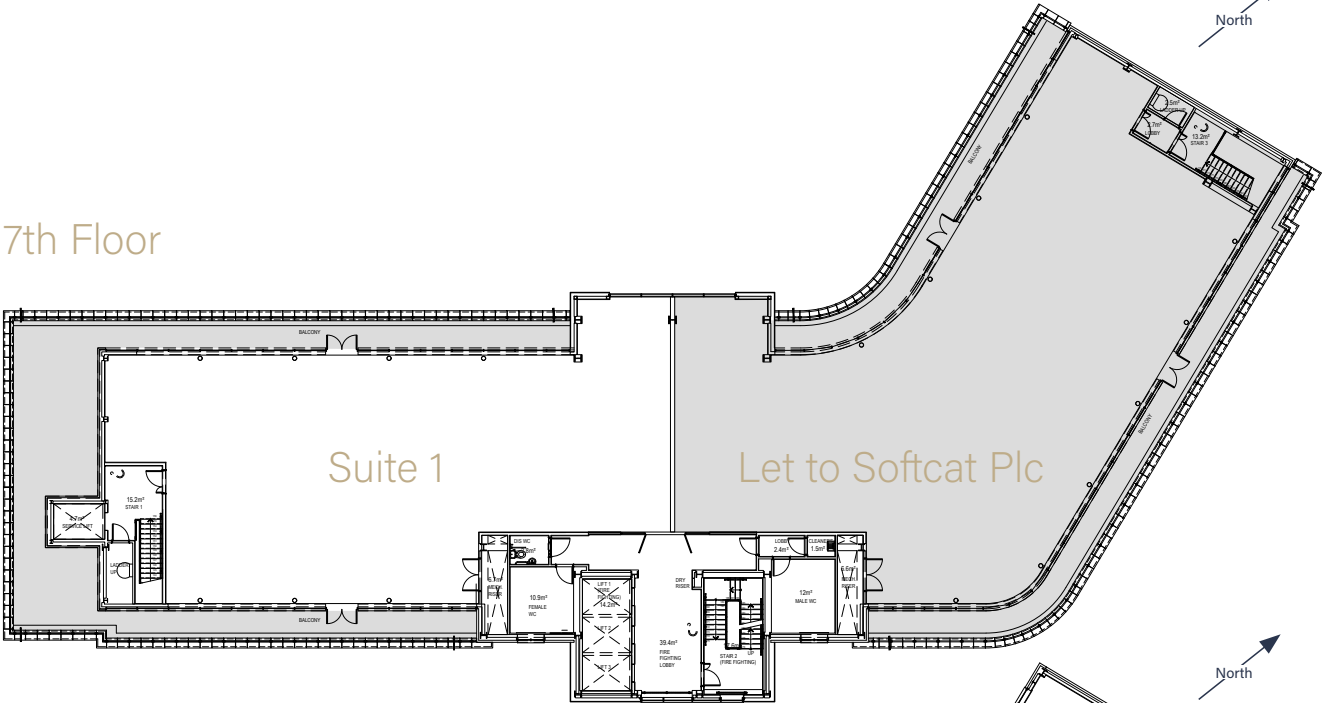
- Refurbished space will offer all-electric VRF air conditioning
- 4 pipe fan coil air conditioning
- Wired Score Gold Certified
- Basement cycle parking
- Showers
- Balcony for exclusive use (7th floor)
- Metal raised floors
- Plank metal tile suspended ceiling
- LED lighting
- EPC Rating C
- Post completion of works the refurbished suites aim to offer suites with an EPC rating of B.
- On-site building management
- 24 hour security
- Building wide IT infrastructure provided by Backbone Connect

- 3 x 8 person passenger lifts
- Goods lift
- On-site car parking
- Two additional multi storey carparks within 2 minute walk



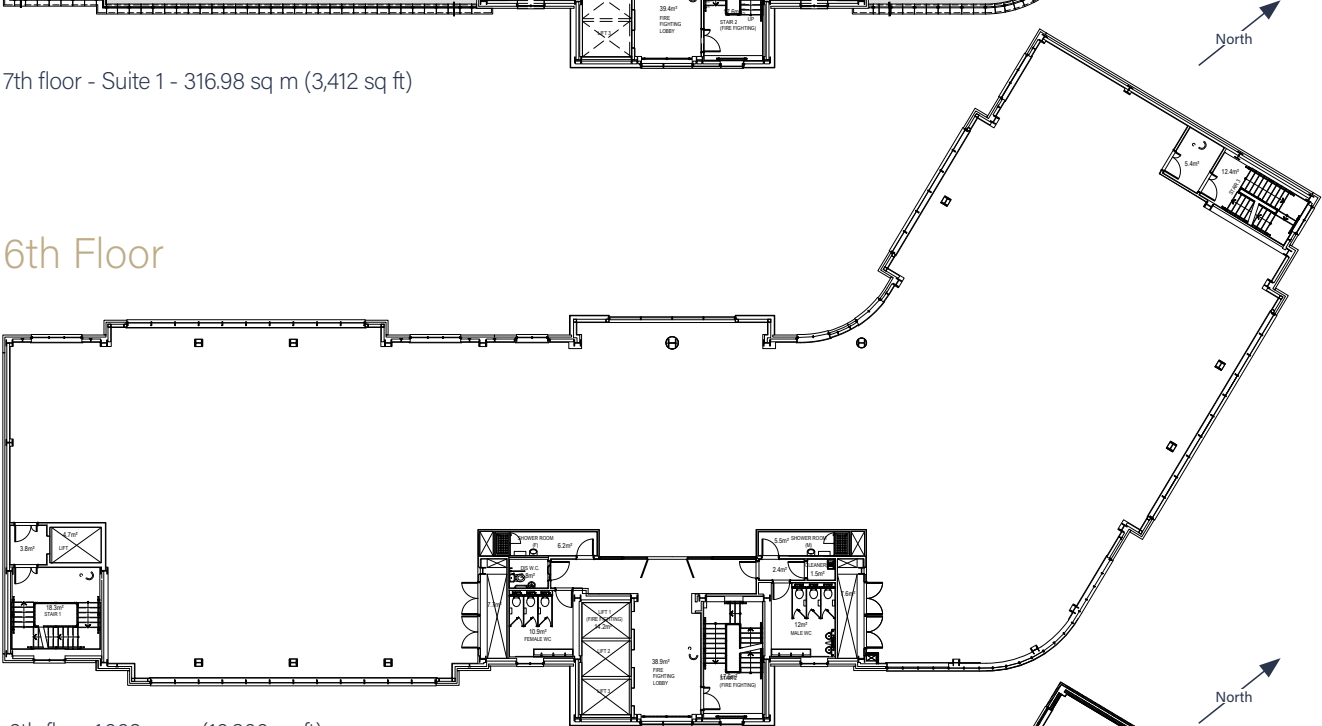
The building has been recently installed with fibre infrastructure offering "Plug and Play" connectivity, and Backbone Connect can provide instant premium business-grade internet access without the need for a wayleave.

7th Floor



7th floor - Suite 1 - 316.98 sq m (3,412 sq ft)

6th Floor



6th floor 1,003 sq m (10,800 sq ft)

Ground Floor



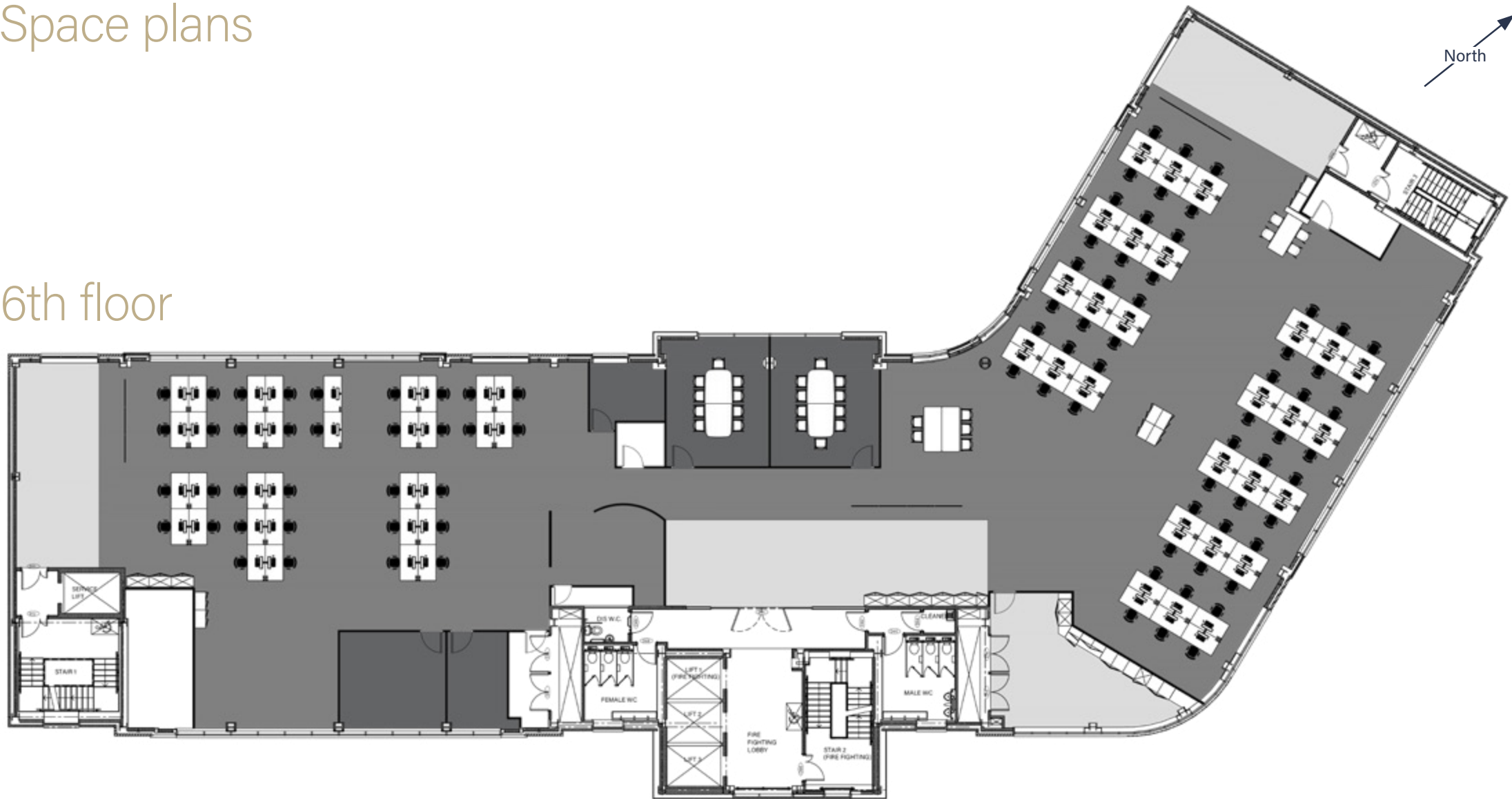
Part ground floor West 398.6 sq m (4,291 sq ft)

Part ground floor East 465.72 sq m (5,013 sq ft)

Space plans

Professional Services Layout

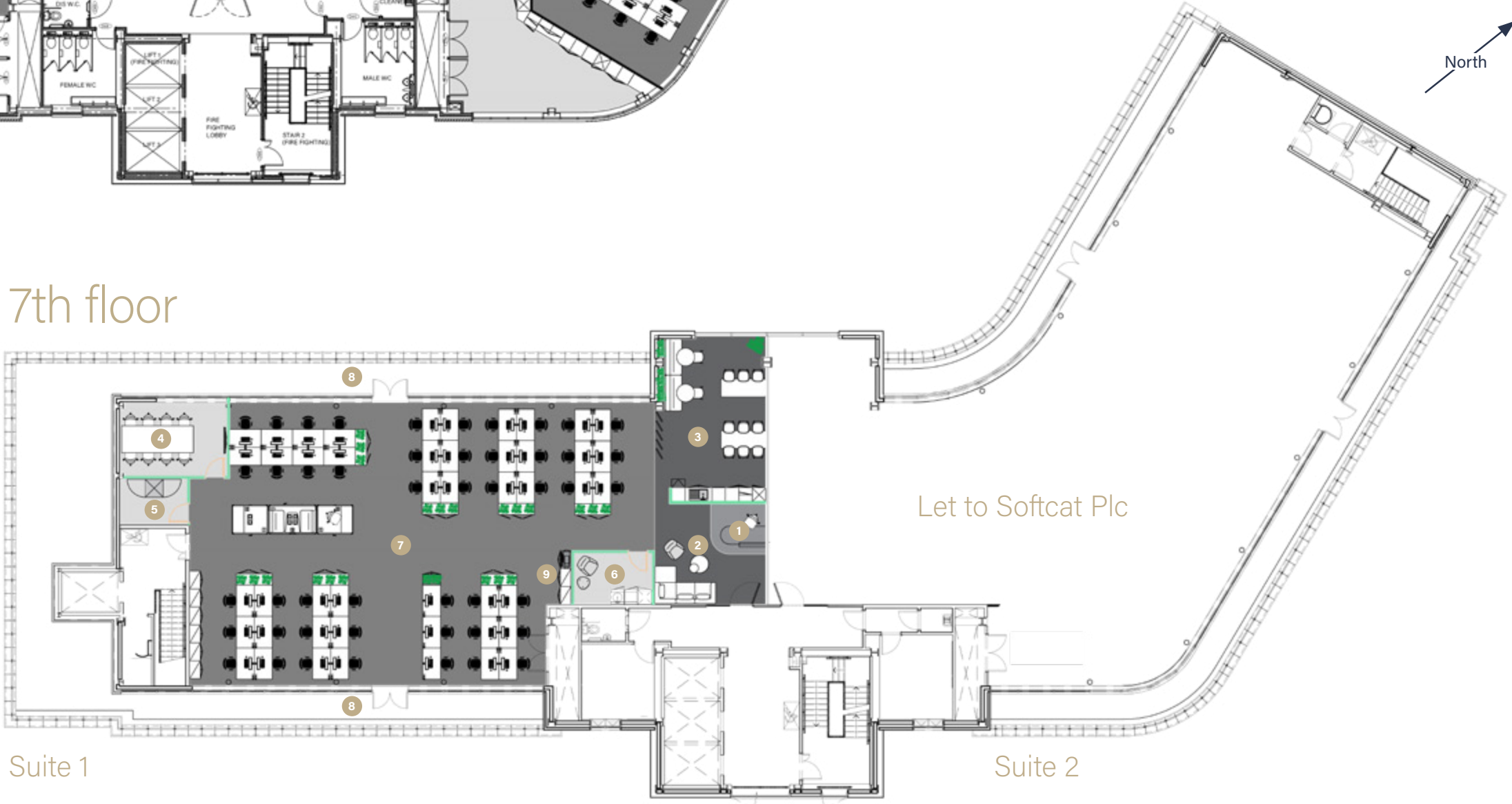
6th floor



Professional Services Layout

- 1 Reception
- 2 Informal lounge
- 3 Kitchen and Breakout Space
- 4 8 Person Meeting Room
- 5 Comms Room
- 6 Wellbeing Room
- 7 45 Open Plan Desks
- 8 Balcony
- 9 Print Hub

7th floor



Suite 1

Suite 2

Let to Softcat Plc



OREGA

2 St James' Gate is home to Orega, offering premium serviced offices for tenants seeking convenience, flexibility and cost certainty.

Orega offers space ranging from 2 - 27 desks and includes all furnishing, breakout space, meeting rooms and internet connectivity.

With this serviced solution you can take occupation of an office within days and the on-site team will be there to support you from day 1.





OREGA

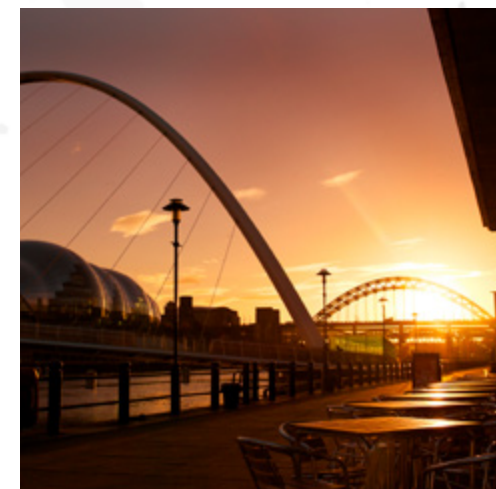
Tenants of 2 St James' Gate all have the opportunity to benefit from the use of the meeting room space and conference facilities offered by Orega.



The perfect position to take advantage of a vibrant mix of restaurants, cafés and shops on the doorstep of a developing quarter of the city.

St James Gate lies at the gateway between Central Station and the Forth Goods Yard and Quayside West Development Area which extends to the south and west. This area is set to deliver a significant number of new homes, offices, leisure and public open space.

St James Gate will therefore be at the heart of an increasingly important business, leisure and residential district of Newcastle City Centre.



Lease Terms

The available office space is available by way of a new effective Full Repairing and Insuring lease, for a term to be negotiated.

Rent

£25.00 per sq ft.

Service Charge

The tenant will be liable for paying a service charge in relation to the maintenance of the buildings communal areas and structure.

Energy Performance Certificate

No2 St James Gate has an energy performance rating of C. Full certificate available upon request.

Legal Costs

Each party is to be responsible for their own legal costs in connection with the preparation and execution of all legal documentation.

VAT

Unless otherwise stated, all prices and rents are quoted exclusive of Value Added Tax (VAT). Any intending purchasers or lessees must satisfy themselves independently as to the incidence of VAT in respect of any transaction.

Money Laundering Regulations

In accordance with the UK Government's 5th Money Laundering Directive counterparty due diligence will be required on a company or individual(s) intending to lease or purchase the subject property on agreement of heads of terms. This will include proof of identity for any beneficial owners of a company with ownership equal to or in excess of 25%.

Contact

For more information regarding the North East's finest offices, please contact the Joint Agents.



Patrick Matheson
Knight Frank

T: 0191 594 5015
M: 07796 192 356

E: patrick.matheson@knightfrank.com

Nathan Douglas
Knight Frank

T: 0191 594 5002
M: 07790 931 318

E: nathan.douglas@knightfrank.com



Jessica Ross
Naylors Gavin Black

M: 07702 528 881
E: jessica@naylorsgavinblack.co.uk

Chris Pearson
Naylors Gavin Black

M: 07834 328 678
E: chrisp@naylorsgavinblack.co.uk

www.stjamesgate.co.uk



PALACE CAPITAL plc

IMPORTANT NOTICE 1. Particulars: These particulars are not an offer or contract, nor part of one. You should not rely on statements by Knight Frank LLP or Naylors Gavin Black in the particulars or by word of mouth or in writing ("information") as being factually accurate about the property, its condition or its value. Neither Knight Frank LLP or Naylors Gavin Black nor any joint agent has any authority to make any representations about the property, and accordingly any information given is entirely without responsibility on the part of the agents, seller(s) or lessor(s). 2. Photos etc: The photographs show only certain parts of the property as they appeared at the time they were taken. Areas, measurements and distances given are approximate only. 3. Regulations etc: Any reference to alterations to, or use of, any part of the property does not mean that any necessary planning, building regulations or other consent has been obtained. A buyer or lessee must find out by inspection or in other ways that these matters have been properly dealt with and that all information is correct. November 2025.